
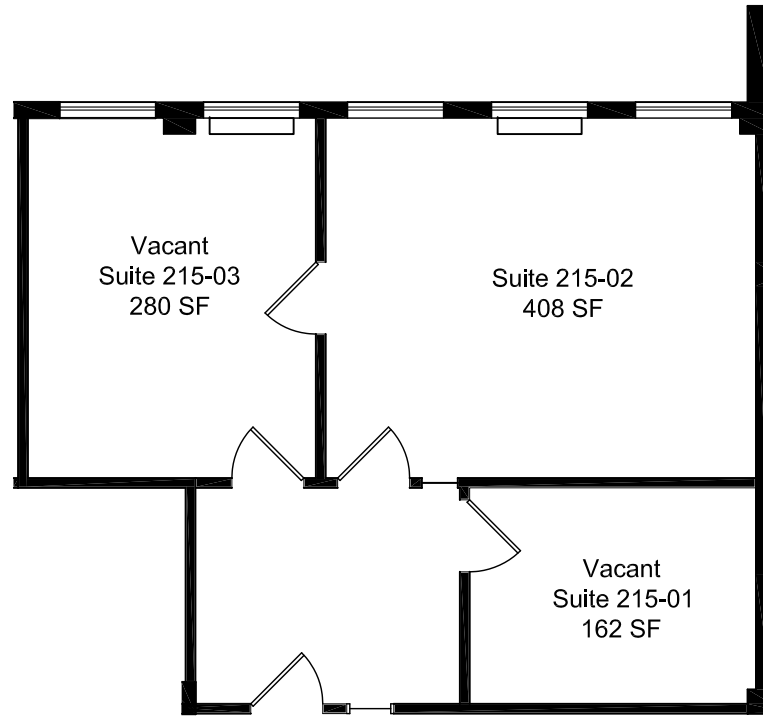


BOULEVARD 25 - 1805 South Bellaire Street

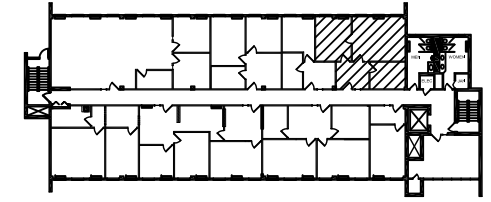
Scale: 1/8" = 1'-0"

Level 2 

March 9, 2016



SUITE 215



KEY PLAN

boulevard **25**



MATRIX
GROUP, INC.

INVESTMENT
REAL ESTATE

Alli Stover, Leasing Agent
Astover@matrixgroupinc.com
(303) 300-5263