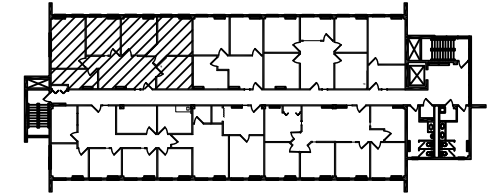
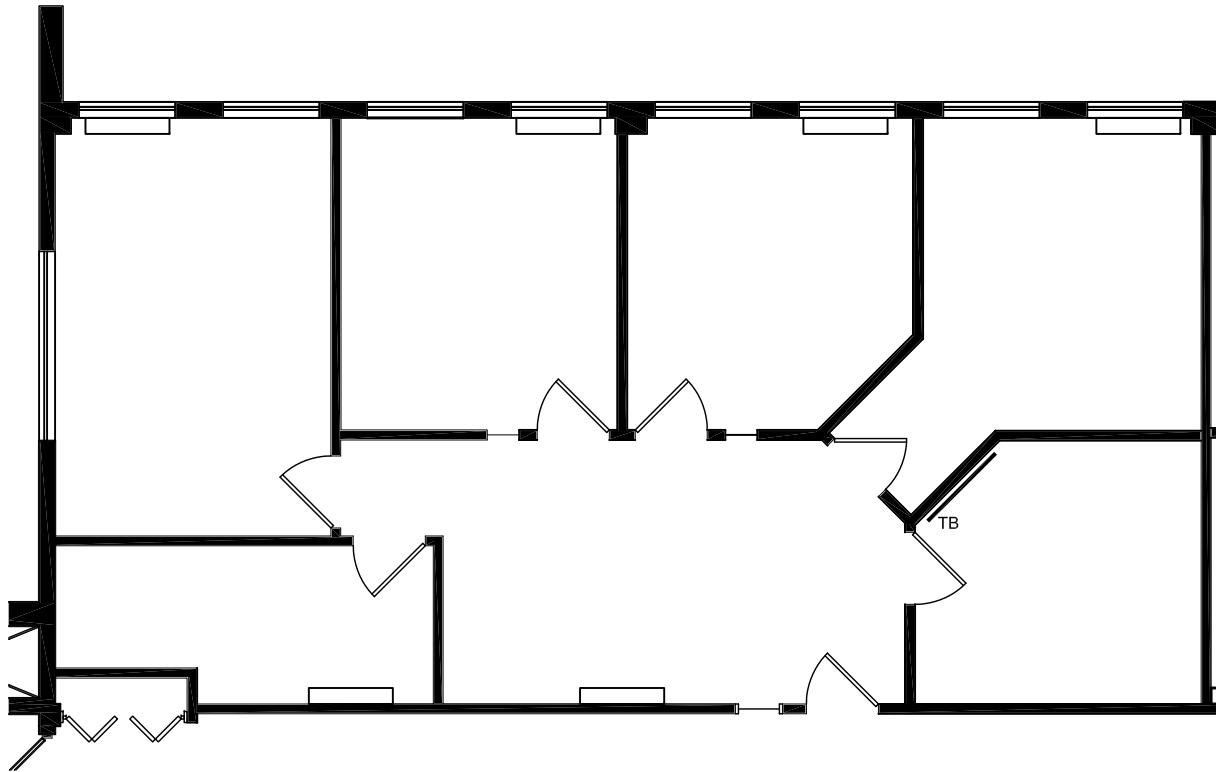


# BOULEVARD 25 - 1777 South Bellaire Street

Scale: 1/8" = 1'-0"

## Level 3

September 10, 2016



KEY PLAN

SUITE 370      1,457 SF



**MATRIX**  
GROUP, INC.

INVESTMENT  
REAL ESTATE

Alli Stover, Leasing Agent  
Astover@matrixgroupinc.com  
(303) 300-5263

boulevard **25**