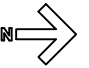
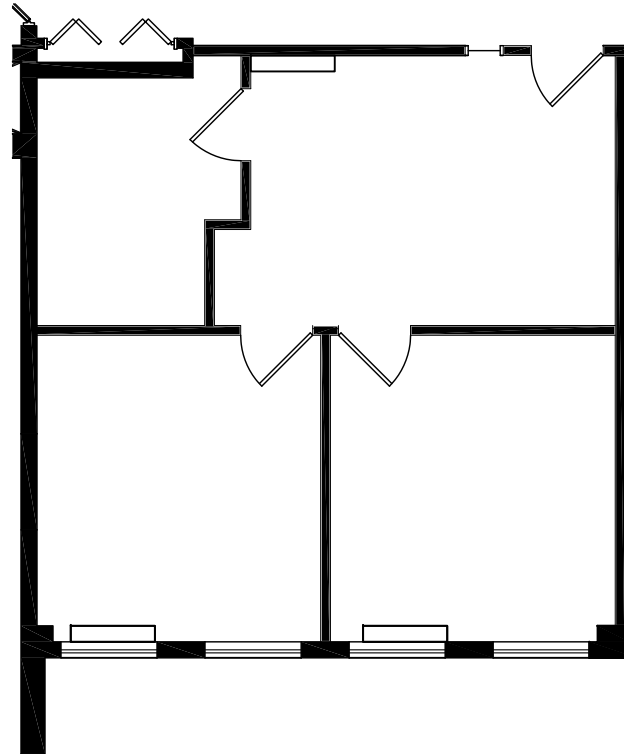


# BOULEVARD 25 - 1805 South Bellaire Street

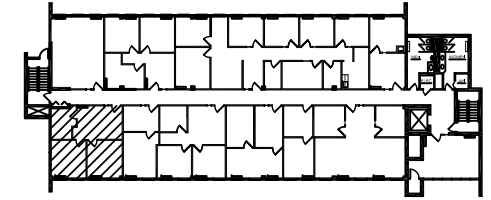
Scale: 1/8" = 1'-0"

Level 3 

March 9, 2016



SUITE 365      732 RSF



KEY PLAN

boulevard **25**



MATRIX  
GROUP, INC.

INVESTMENT  
REAL ESTATE

Alli Stover, Leasing Agent  
Astover@matrixgroupinc.com  
(303) 300-5263