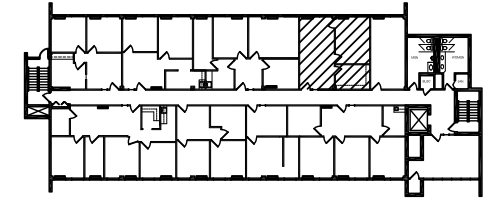
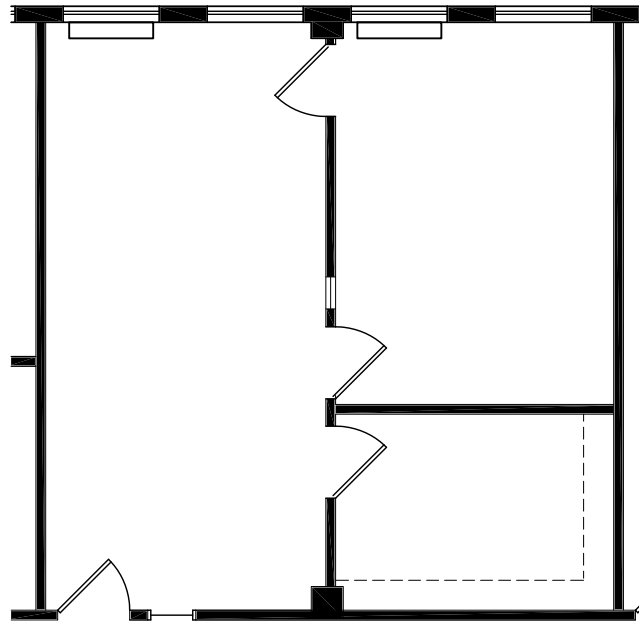


BOULEVARD 25 - 1805 South Bellaire Street

Scale: 1/8" = 1'-0"

Level 5

January 18, 2017



KEY PLAN

SUITE 505
SCALE: 1/8" = 1'-0"

687 RSF



boulevard **25**



MATRIX
GROUP, INC.

INVESTMENT
REAL ESTATE

Alli Stover, Leasing Agent
Astover@matrixgroupinc.com
(303) 300-5263