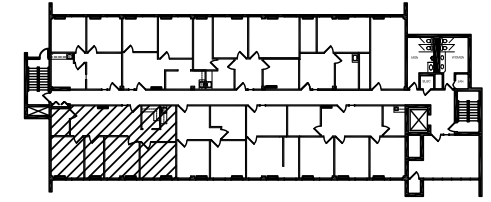
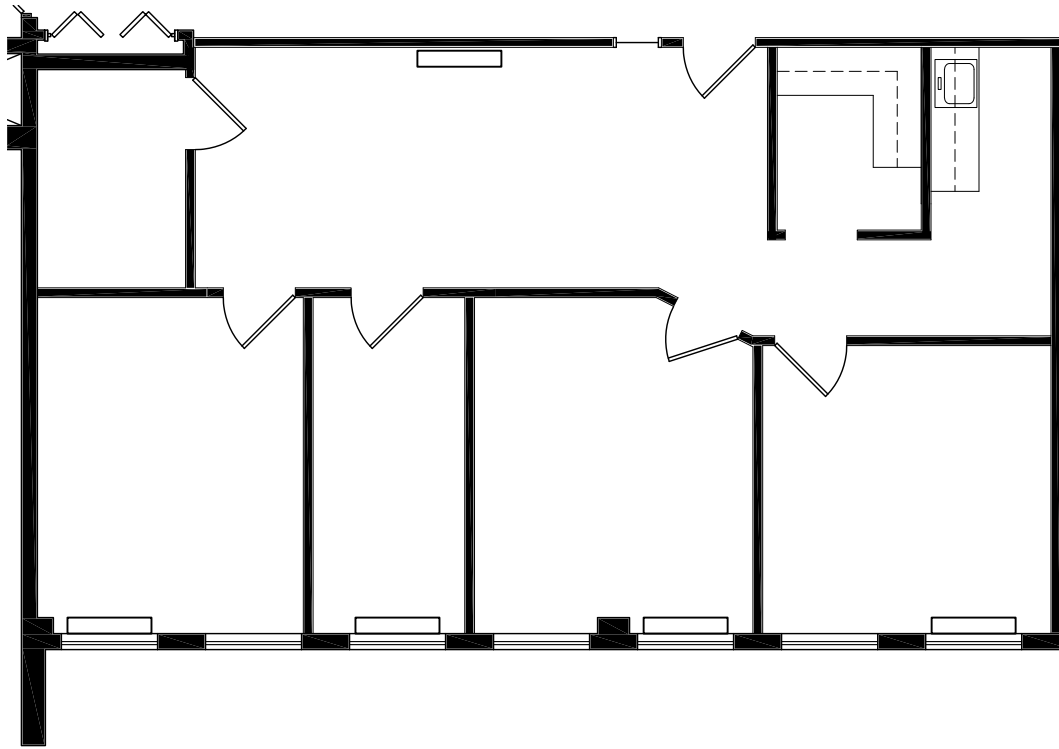


BOULEVARD 25 - 1805 South Bellaire Street

Scale: 1/8" = 1'-0"

Level 5

October 2, 2017



KEY PLAN

SUITE 575 1,284 RSF
SCALE: 1/8" = 1'-0"



boulevard **25**



MATRIX
GROUP, INC.

INVESTMENT
REAL ESTATE

Alli Stover, Leasing Agent
Astover@matrixgroupinc.com
(303) 300-5263