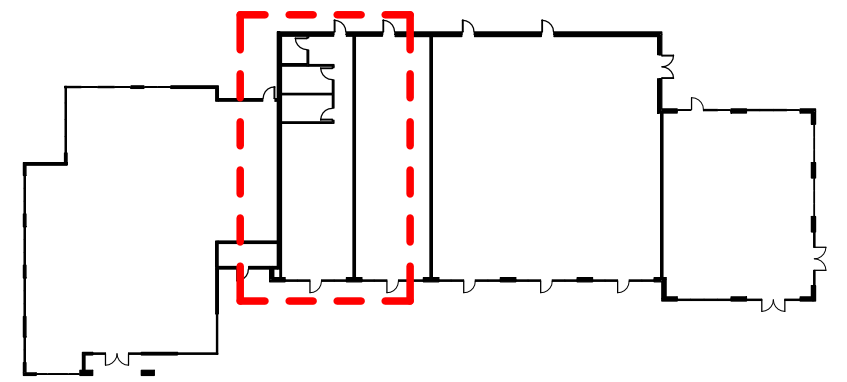
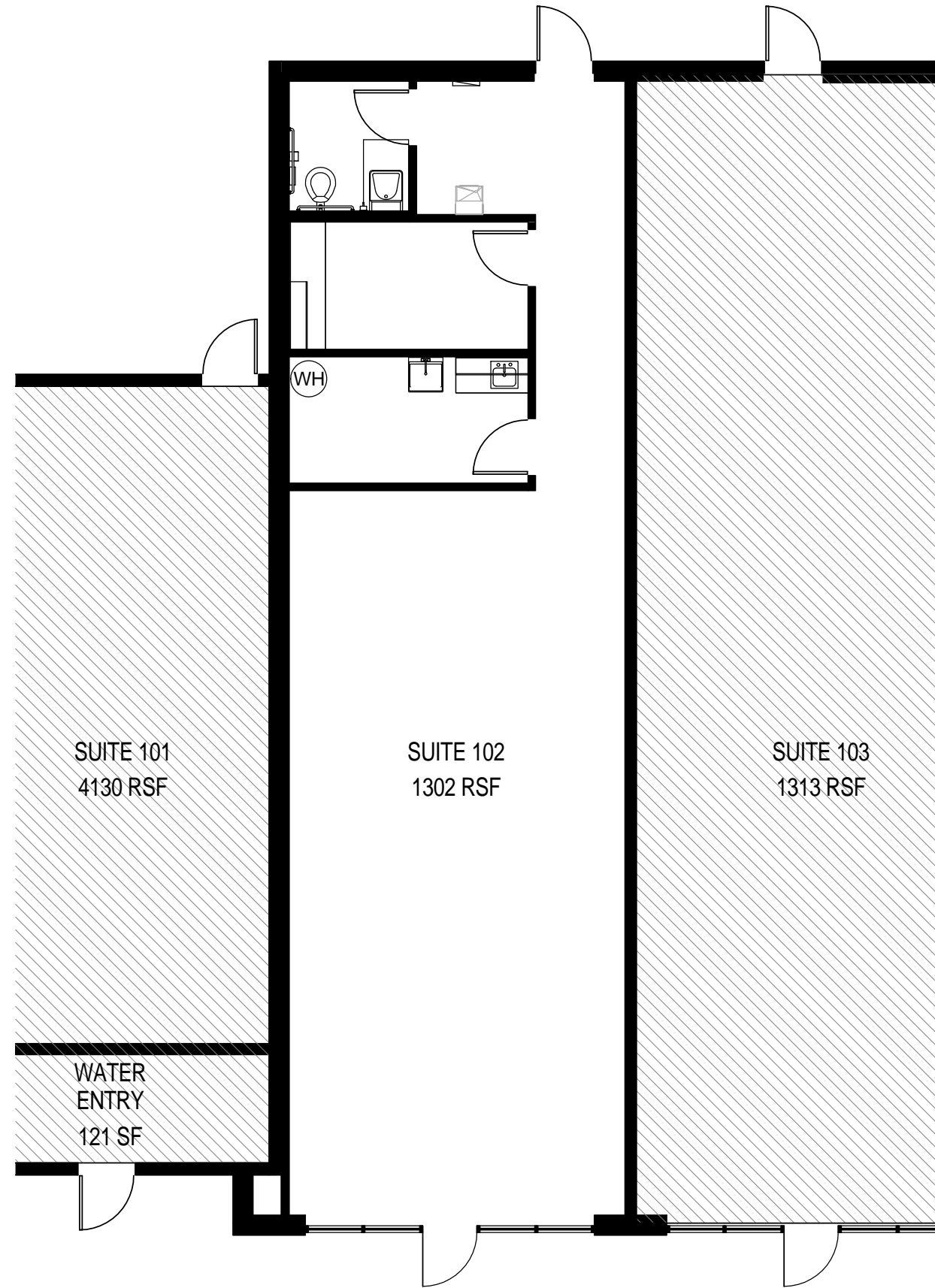


ENLARGED PLAN - SUITE 102

1,302 RSF



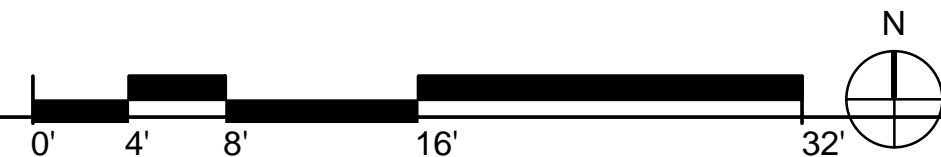
KEY PLAN



MATRIX
GROUP, INC.

INVESTMENT
REAL ESTATE

Alli Stover, Leasing
Astover@matrixgroupinc.com
(303) 300-5263



REUNION VILLAGE BUILDING 1
A PROJECT FOR
MATRIX GROUP

DENVER

02/08/10

COLORADO

174049

powers
brown
archit
ecture