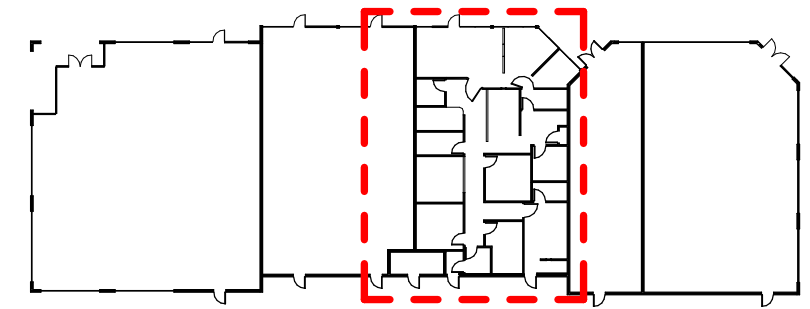
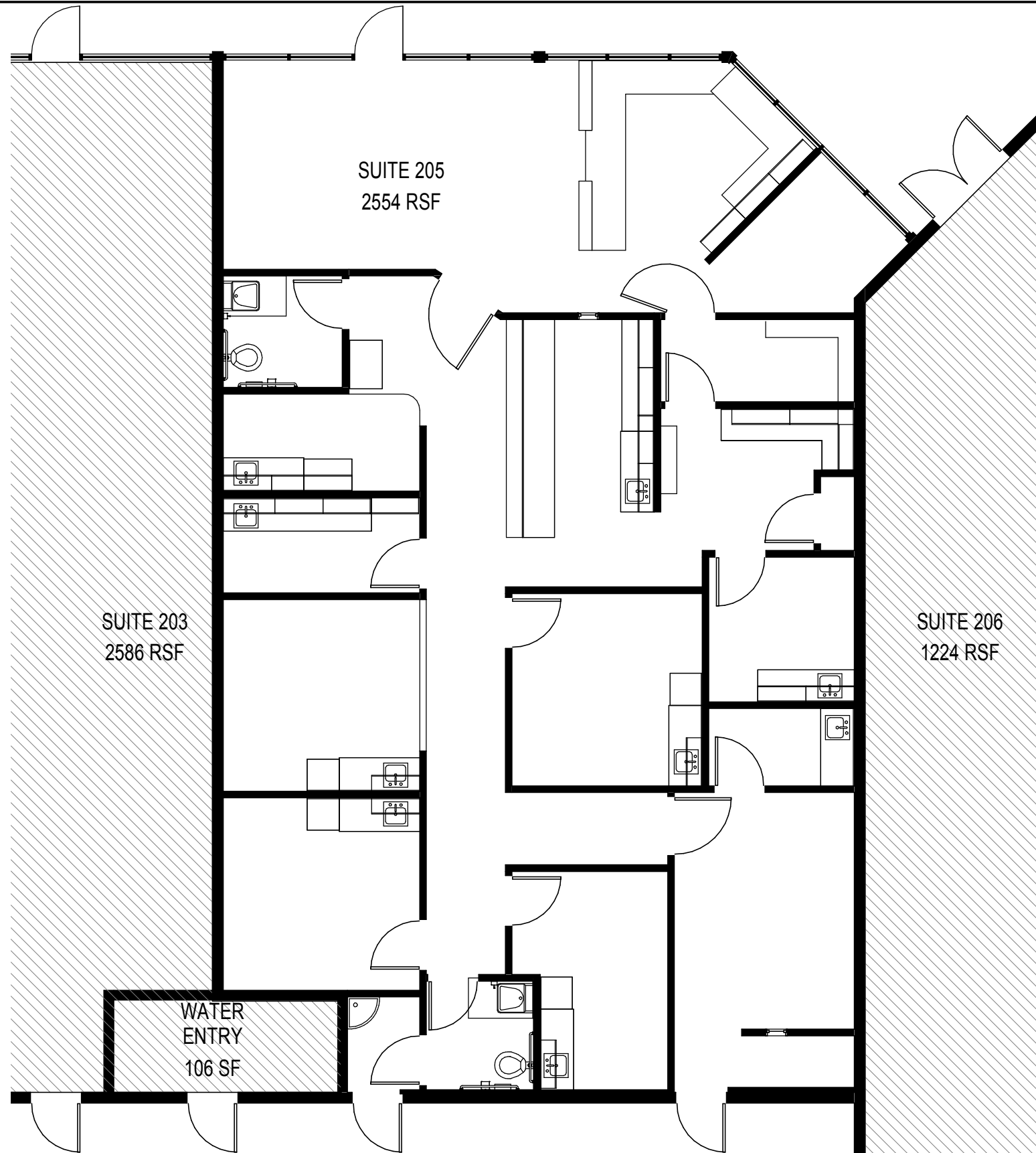


ENLARGED PLAN - SUITE 205

2,554 RSF



KEY PLAN



MATRIX
GROUP, INC.

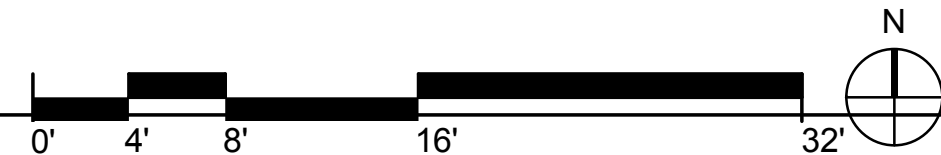
INVESTMENT
REAL ESTATE

Alli Stover, Leasing
Astover@matrixgroupinc.com
(303) 300-5263

SUITE 203
2586 RSF

SUITE 206
1224 RSF

WATER
ENTRY
106 SF



REUNION VILLAGE BUILDING 2

A PROJECT FOR
MATRIX GROUP

DENVER

05/05/10

COLORADO

174039

powers
brown
archi
ecture